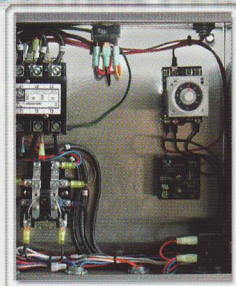




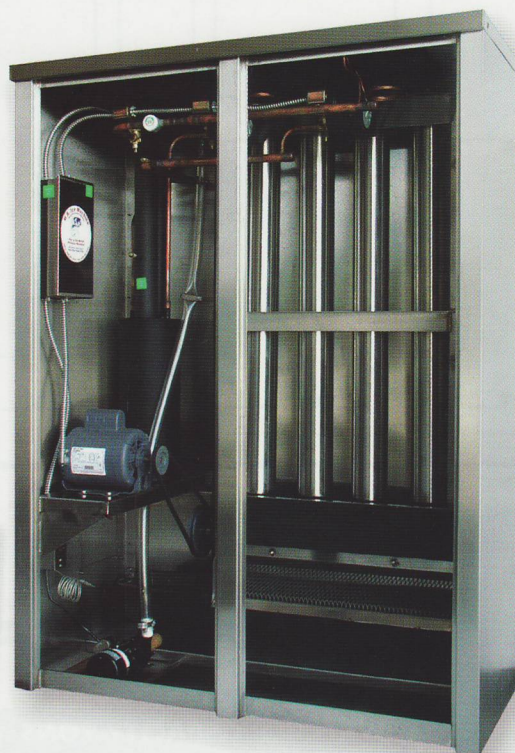
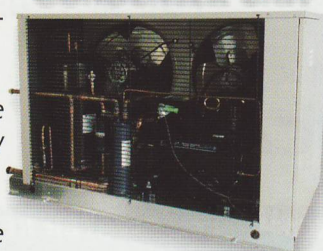
U.S. Ice Machine Mfg. Co.

- Rated as one of the strongest ice machines in the world.
- Most efficient in electrical and water consumption.
- Economical, rugged, and dependable.
- All machines are completely constructed of heavy-duty 304 stainless steel, except for the compressors, motors, pumps, etc.
- Multi-purpose models available to suit all of your needs.
- Self-contained, remote and skid-mounted units available.
- Our super-hard cracked ice machine is an industrial machine in a class by itself.

CONTROL PANEL



CONDENSER UNIT



- **Salt Water Ice Machines:** We manufacture all sizes of salt water ice machines for both land-based and marine-based applications.
- **Evaporator:** Manufactured from 304 stainless steel sanitary tubing. Features heavy-duty construction with a mirror finish.
- **Double Wall Freezing:** Allows ice to form on both the inside and outside of the wall.
- **Water Distributor:** Constructed as a single piece. Simply loosen a screw to remove.
- **Control Panel:** Made from heavy-duty stainless steel. No electronic or computer components. Repair is simple. All parts are readily available from any refrigeration dealer.

- **Crusher Bar:** Made from 3/8" thick solid 304 stainless steel bars inserted all the way through the heavy shaft and welded on both sides. The crusher teeth have a lifetime warranty.
- **Bearings:** Zero maintenance. Self-lubricating - never need greasing.
- **Warranty:** Unsurpassed in the industry. We offer a 10 year warranty on the evaporator.
- All machines are tested and balanced for a minimum of 48 hours before being allowed to leave the factory.
- Custom-built units available.

- **Advanced Oxidization Ice Treatment:** Utilizes ozone in combination with ultraviolet light to create an advanced oxidation reaction. This reaction process uses powerful oxidizers to kill bacteria and mold in water that is used in ice production. The oxidizers created in this process include: hydroxyl radicals, superoxide ions, hydroperoxides and ozone.

Benefits of this treatment process include: reduced bacteria and mold, extended product shelf life, no chemical additions, continuous treatment during ice production, UV dosages in excess of 40 mWatt-sec/cm.

ONE OF THE STRONGEST ICE MACHINES IN THE WORLD

650 N.W. 123rd Street • North Miami, FL 33168

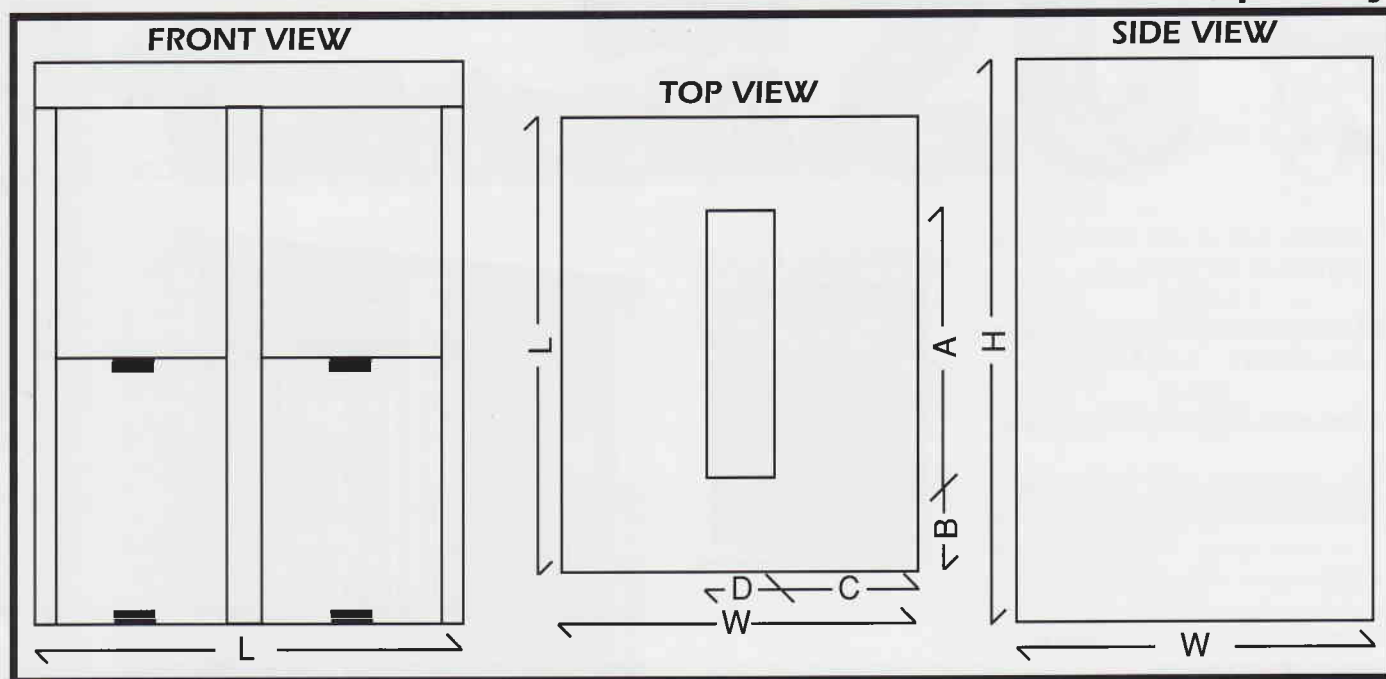
Tel. 305.681.0023 • Toll-Free 877.681.6623 • Fax 305.681.5154

Email: info@usicemachinemfg.com • Website: www.usicemachinemfg.com www.usicemachine.net

US-0450
4,500 Lb. Cracked Ice Machine

MODEL: US-0450

CAPACITY: 4,500 Lbs. per day



Length: 48"

Width: 23"

Height: 64"

A: 30"

B: 4"

C: 9"

D: 6"

SPECIFICATIONS

WATER TEMP.	CAPACITY TONS (PER 24 HRS.)	KWH (PER 100 LBS.)	WATER REQ. (GPM)	
			ICE	CONDENSER
90° F	1.808	1.77	0.25	12.3
80° F	1.844	1.64	0.25	6.1
70° F	1.881	1.59	0.26	4.3
60° F	1.890	1.48	0.27	3.4
50° F	1.918	1.35	0.27	2.1

Weight:

Electrical Requirements:

54 F.L.A. water-cooled

55.1 F.L.A. air-cooled

208 / 230 volt 3 phase 60 Hertz (optional 380 / 440 volts)

Compressor:

7.5 H.P. high-efficiency compressor

Condensing Unit:

Refrigerant R-22 with semi-hermetic compressor and water-cooled tube type condenser. Remote air-cooled condenser included.

Note: Capacity based on ambient air temperature of 90° F and water temperature of 70° F. All capacity ratings are taken on average basis.

U.S. Ice reserves the right to change specifications and design without notice.



ONE OF THE STRONGEST ICE MACHINES IN THE WORLD

650 N.W. 123rd Street • North Miami, FL 33168

Tel. 305.681.0023 • Toll-Free 877.681.6623 • Fax 305.681.5154

Email: info@usicemachinemfg.com • Website: www.usicemachinemfg.com www.usicemachine.net